



# LOAD BEARING ROLLER ASSEMBLIES EXTREME DUTY SOLUTIONS

High Temperature Track Rollers & XR Rollers

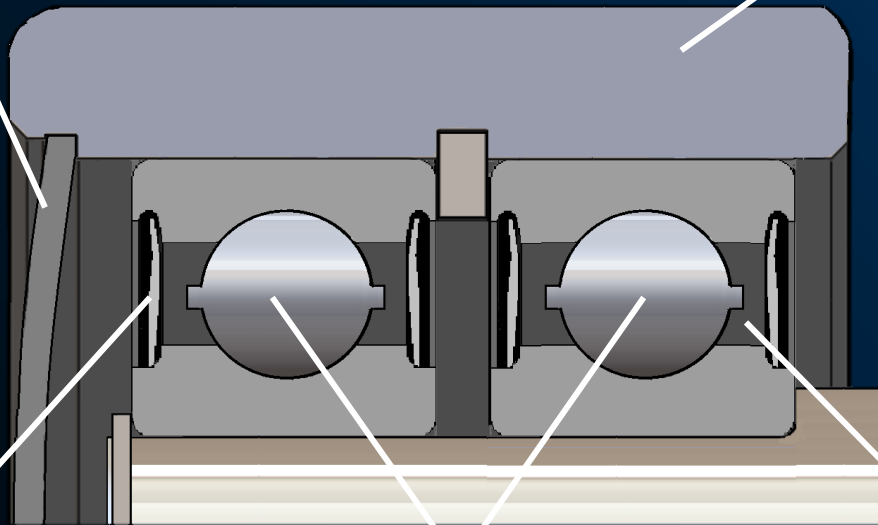
## Defeat Extreme Heat – The 350°F Solution

### TIGHT FIT STAINLESS STEEL COVER\*

Maximum protection against direct spray and contamination

### CASE HARDENED ROLLER BODY

Maintains the integrity of the assembly by preventing pre-mature fracture under shock loads.



### FLUOROCARBON LIP SEALS

Lasting protection of the bearing elements in high temperatures.

### PRECISION HIGH TEMPERATURE DEEP GROOVE BALL BEARINGS

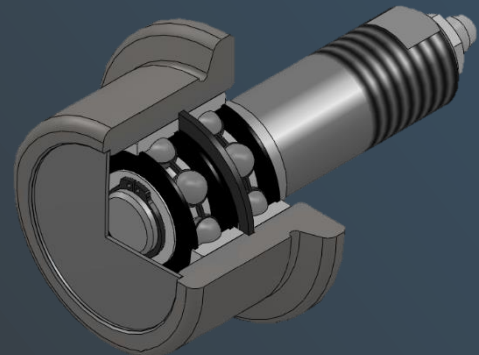
Performance under high speeds and combination loads in a high temperature environment.

### PREMIUM HIGH TEMP LUBRICANT

Performance in applications up to 350°F (Continuous)

### EXTEND PERFORMANCE WITH RELUBE

PCI High Temperature Rollers are available IN STOCK with regreasing provisions to maximize life in your demanding application. PCI High Temperature Rollers are supplied with wrench flats for easy installation and a readily accessible grease fitting located in the end of the stud for ease of maintenance. Add a “-R” suffix to the part number to Replenish & ReUse...Relube



\*Features dependent on size and style of unit. See specifications for details.

989.358.6148  
www.pcimfg.com



# LOAD BEARING ROLLER ASSEMBLIES EXTREME DUTY SOLUTIONS

High Temperature Track Rollers & XR Rollers

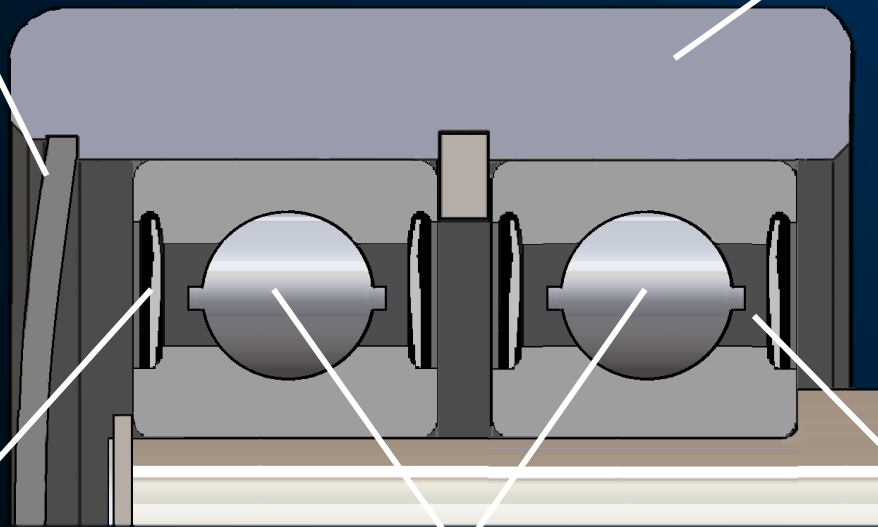
## Defeat Extreme Heat – The 660°F Solution

### TIGHT FIT STAINLESS STEEL COVER\*

Maximum protection against direct spray and contamination

### CASE HARDENED ROLLER BODY

Maintains the integrity of the assembly by preventing pre-mature fracture under shock loads.



### STEEL SHIELDS

Protection of the bearing elements in extreme temperatures.

### PRECISION HIGH TEMP BALL OR TAPERED ROLLER BEARINGS

Performance under low speeds and combination loads in a high temperature environment.

### HIGH TEMP SOLID LUBRICANT

Performance for up to 660°F (Continuous) with no relubrication required.

### NO RELUBRICATION REQUIRED

PCI incorporates Cobra Solid Lubricant™ (CSL) - a mixture of graphite and binders creating a solid lubricant in this offering. The solidified mixture will fill the entire space between the races, rolling elements and cage to prevent metal to metal contact. CSL prevents contaminants from entering the bearing while providing a low coefficient of friction. Unlike petroleum-based lubricants, CSL cannot be washed out by steam or other common solvents, acids, or alkalis except under direct high-pressure. CSL will not drip or fling, is environmentally clean and may substantially increase bearing life and eliminate relubrication maintenance – even at high temperatures!

Cobra Solid Lubricant™ (CSL) is a trademark of Unique Technologies Associates

\*Features dependent on size and style of unit. See specifications for details.