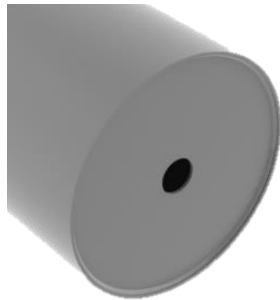


# CONVEYOR PULLEYS

## Available Hub Styles

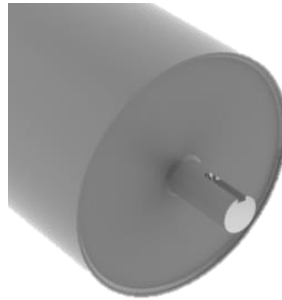


### PLAIN BORE (WELDED SHAFT) (TYPE 1/TYPE A)



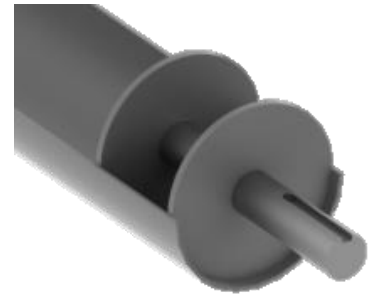
End disks are bored to allow for a customer welded through shaft.

### WELDED THROUGH SHAFT (TYPE 1/TYPE A)



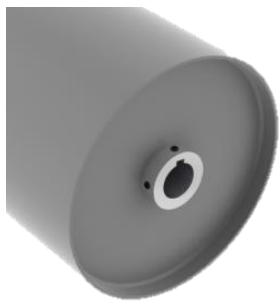
A singular shaft extends through the entire pulley and is welded at both end disks.

### WELDED STUB SHAFT



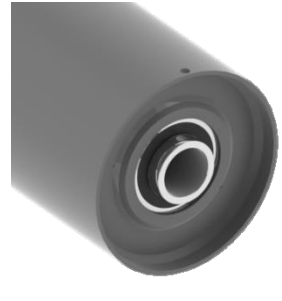
An assembly consisting of a short length of shaft and two disks is welded into each end of the pulley.

### KEYED HUBS & SET SCREWS (TYPE 2/TYPE B/TYPE D)



Removable shaft extends thru the pulley, is held in place with set screws and driven by a keyway.

### ER STYLE INTERNAL BEARINGS (TYPE 3/TYPE C)



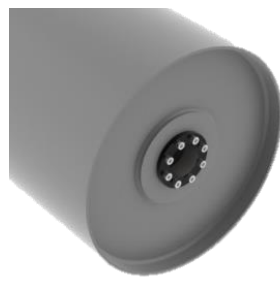
End disks are fitted with bearing units to allow rotation of the pulley around the shaft.

### WELDED COMPRESSION STYLE HUBS & BUSHINGS (TYPE 4)



A compression style hub is welded to the end disk and a through shaft is affixed by use of a tapered bushing. XT®, QD® and Taper-Lock® styles are readily available.

### KEYLESS LOCKING DEVICES (TYPE 5)



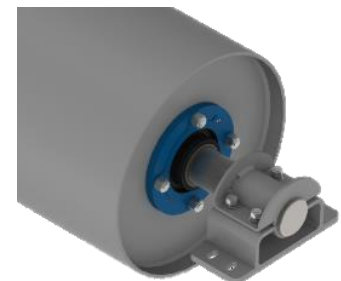
Hubs are welded and machined to accept a mechanical shrink fit style hub and through shaft. Several manufacturers & brands are available.

### CONTOURED INTEGRAL END DISKS & HUBS FOR BUSHINGS



A compression hub is machined directly into a profiled end disk in place of a welded style hub.

### DEAD SHAFT ASSEMBLY



End disks are fitted with piloted flange bearings and the shaft is held by fixed mounting blocks designed to easily replace external pillow block bearings.

XT® is a trademark of Van Gorp Corp. QD® is a trademark of Emerson Electric Co... Taper-Lock® is a trademark of Reliance Electric