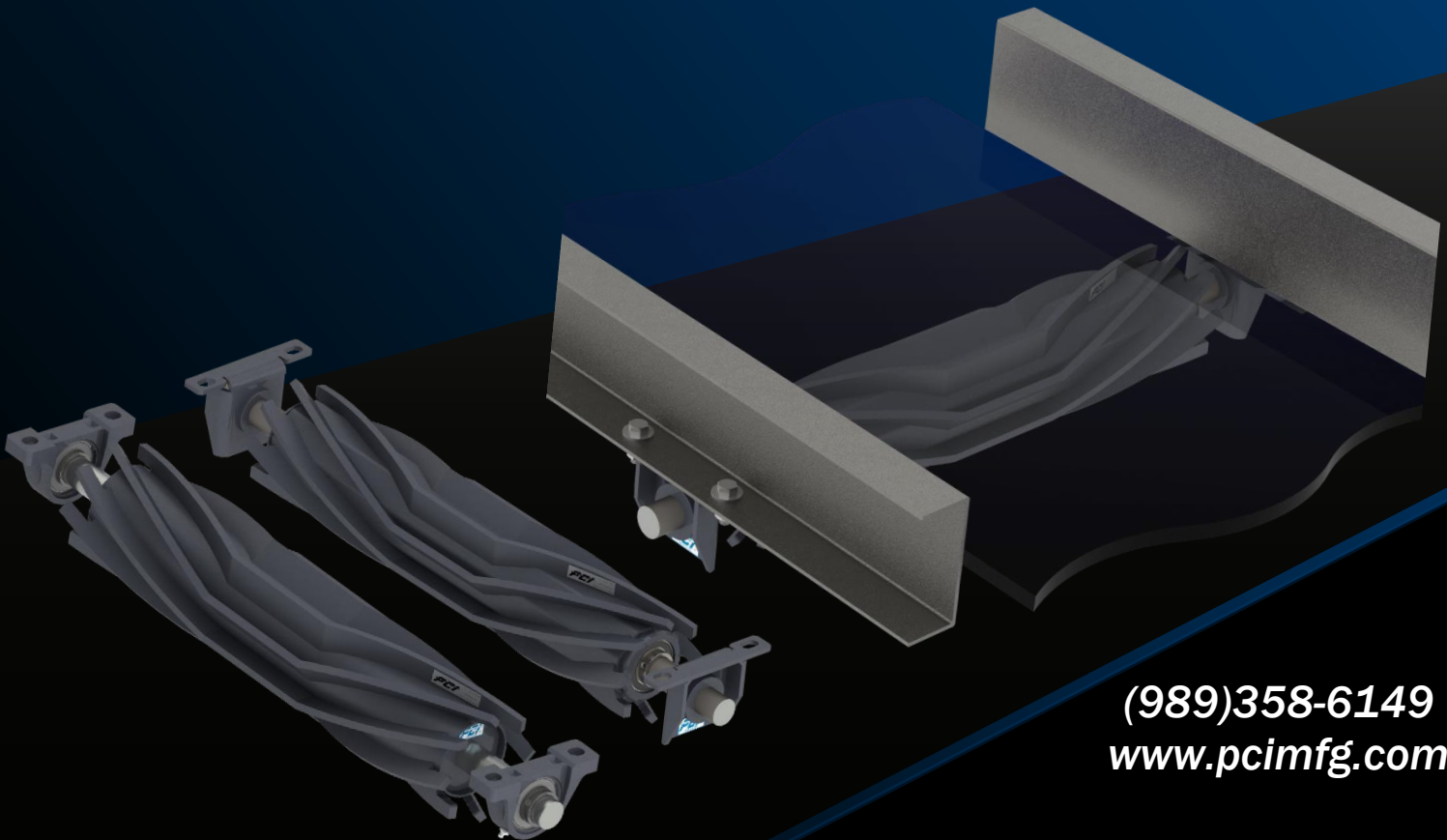




RETURN ROLLS



(989)358-6149
www.pcimfg.com

**\$360,000 savings using
Eradicator[®]-MAX Return Roll**

PROBLEM:

WET SAND - EXTRACTING PROFIT FROM THE BOTTOM LINE

Belt scrapers and an air knife were not effective in removing wet sand and materials embedded in the transfer conveyor belt of a cement plant. To maintain a safe working environment, a vacuum truck was needed to remove debris – while simultaneously extracting approximately \$40,000 per month from the bottom line.



Cement Plant

SOLUTIONS THROUGH INNOVATION FOR NEARLY 40 YEARS!

SOLUTION:

ERADICATOR[®] MAX RETURN ROLL ACCELERATES CLEAN OUT

The PCI[®] Eradicator[®] Max Return Roll was installed in the support position on the underside of the conveyor belt. The wet particulate was forced through the angled wings where the abrasive debris was quickly removed. Operational production increased and vacuum cleanout was reduced by \$30,000 per month! The PCI[®] patented Eradicator[®] Max Return Roll angled wings creates the ultimate in self-cleaning solutions!



U.S. Patent Number 8,857,606

Learn more about this product at www.pcimfg.com/products/eradicator-max-return-rolls/

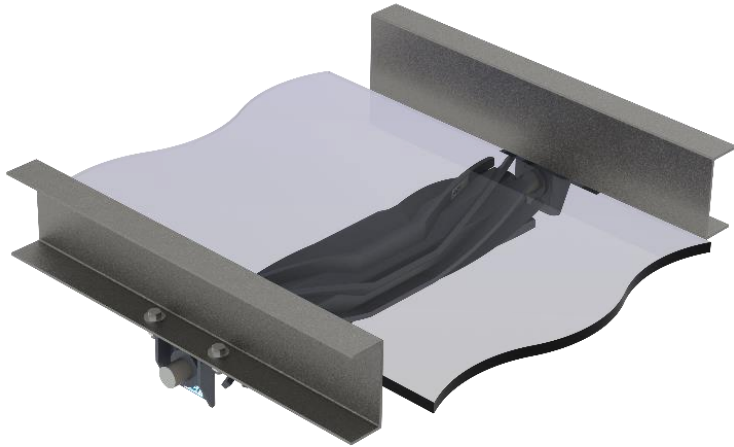
CONVEYING COMPONENTS

Return Rolls

Eradicator Max[®] Return Rolls



Return Rolls are typically installed on the underside of a conveyor to provide support to the returning conveyor belt. The PCI[®] patented Eradicator[®] Max Return Rolls address the performance shortfalls commonly associated with beater bar, squirrel cage and rubber disk style return rolls by optimizing cleanout, maximizing unit strength, and multiplying the serviceable hours of the unit.

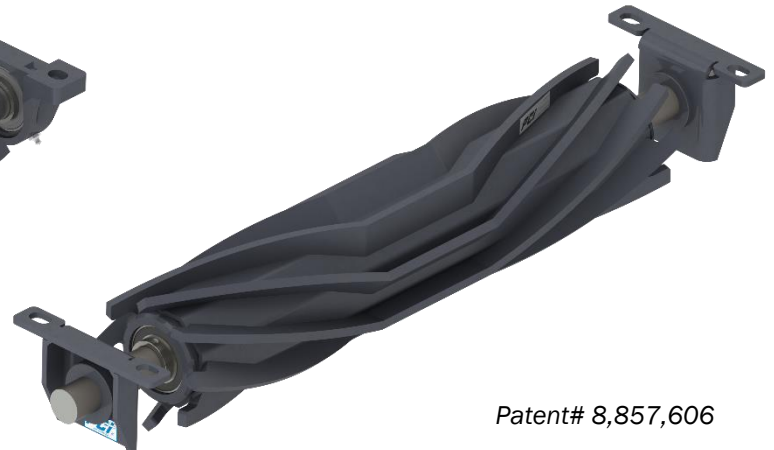


DESIGN BENEFITS

Accelerated Cleanout

Increased Shaft Capacity

*Available in Both Live Shaft and
Dead Shaft Configurations*



Patent# 8,857,606

Optimizing Cleanout: PCI Eradicator Max return rolls not only support the belt, but also create the ultimate in self-cleaning solutions with patented angled wings that force particulate away from its center toward its open ends.

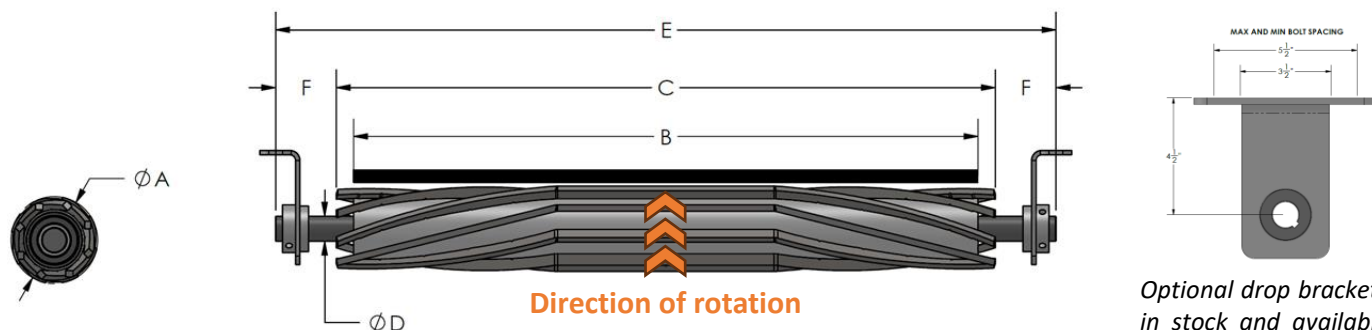
Maximizing Unit Life: PCI Eradicator Max angled wings provide debris protection by removing abrasive materials from the roll core while the thicker wings create a deeper wear surface than typical tube roll or beater bar styles.

Increasing System Uptime: PCI Eradicator Max return roll's innovative designs allow increased shaft sizes to accommodate bearings with a longer L10 life. In addition, by ejecting unwanted material that damage components, the Eradicator Max return roll helps minimize maintenance and downtime.

CONVEYING COMPONENTS

Eradiator® Max Return Rollers

DEAD SHAFT STYLE



Direction of rotation

All wing thicknesses are 3/8".

Optional drop brackets are in stock and available for 4-1/2" and 7" drops.

Part Number	A	B	C	D	E	F	Weight, lbs*
	Roller Diameter	Belt Width	Face Width	Shaft Diameter	Shaft Length	Shaft Extensions	
RED-6W18-100	6	18	20	1	27	3-1/2	45
RED-6W24-100	6	24	26	1	33	3-1/2	54
RED-6W30-100	6	30	32	1	39	3-1/2	64
RED-6W36-100	6	36	38	1	45	3-1/2	73
RED-6W42-100	6	42	44	1	51	3-1/2	82
RED-6W48-100	6	48	51	1	57	3	93
RED-6W54-100	6	54	57	1	63	3	102
RED-6W60-100	6	60	63	1	69	3	111
RED-6W72-100	6	72	75	1	81	3	130
RED-6W18-107	6	18	20	1-7/16	27	3-1/2	51
RED-6W24-107	6	24	26	1-7/16	33	3-1/2	61
RED-6W30-107	6	30	32	1-7/16	39	3-1/2	72
RED-6W36-107	6	36	38	1-7/16	45	3-1/2	83
RED-6W42-107	6	42	44	1-7/16	51	3-1/2	93
RED-6W48-107	6	48	51	1-7/16	57	3	106
RED-6W54-107	6	54	57	1-7/16	63	3	117
RED-6W60-107	6	60	63	1-7/16	69	3	127
RED-6W72-107	6	72	75	1-7/16	81	3	147
RED-6W18-115	6	18	20	1-15/16	27	3-1/2	74
RED-6W24-115	6	24	26	1-15/16	33	3-1/2	91
RED-6W30-115	6	30	32	1-15/16	39	3-1/2	107
RED-6W36-115	6	36	38	1-15/16	45	3-1/2	124
RED-6W42-115	6	42	44	1-15/16	51	3-1/2	141
RED-6W48-115	6	48	51	1-15/16	57	3	159
RED-6W54-115	6	54	57	1-15/16	63	3	176
RED-6W60-115	6	60	63	1-15/16	69	3	192
RED-6W72-115	6	72	75	1-15/16	81	3	226

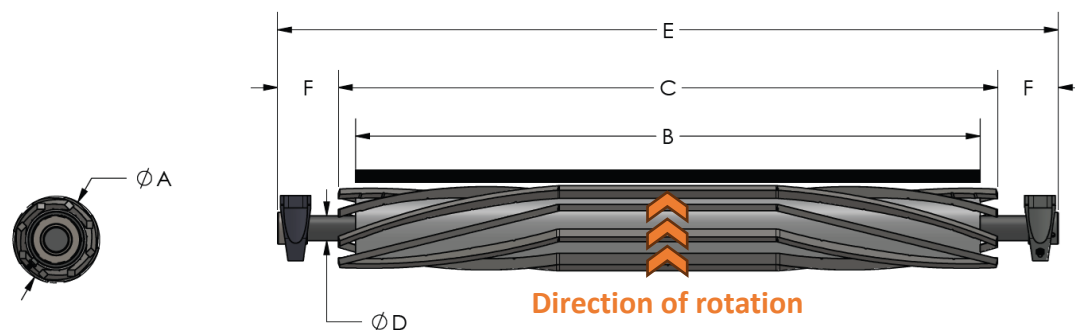
Optional Triple-Lip Seal Bearing
N/A
N/A
N/A
N/A
N/A
N/A
N/A
N/A
N/A
N/A
RED-6W18-107-TLS
RED-6W24-107-TLS
RED-6W30-107-TLS
RED-6W36-107-TLS
RED-6W42-107-TLS
RED-6W48-107-TLS
RED-6W54-107-TLS
RED-6W60-107-TLS
RED-6W72-107-TLS
N/A
N/A
N/A
N/A
N/A
N/A
N/A
N/A

* Weight includes roller, shaft, and brackets.

CONVEYING COMPONENTS

Eradicator® Max Return Rollers

LIVE SHAFT STYLE



Optional two-bolt pillow block ball bearings are in stock and available.

All wing thicknesses are 3/8".

Part Number	A	B	C	D	E	F	Weight, lbs**
	Roller Diameter	Belt Width	Face Width	Shaft Diameter	Shaft Length	Shaft Extensions	
REL-4W18-012	4	18	20	3/4	27	3-1/2	16
REL-4W24-012	4	24	26	3/4	33	3-1/2	21
REL-4W30-012	4	30	32	3/4	39	3-1/2	25
REL-4W36-012	4	36	38	3/4	45	3-1/2	30
REL-4W42-012	4	42	44	3/4	51	3-1/2	33
REL-4W48-012	4	48	51	3/4	57	3	38
REL-4W18-100	4	18	20	1	27	3-1/2	19
REL-4W24-100	4	24	26	1	33	3-1/2	24
REL-4W30-100	4	30	32	1	39	3-1/2	29
REL-4W36-100	4	36	38	1	45	3-1/2	34
REL-4W42-100	4	42	44	1	51	3-1/2	38
REL-4W48-100	4	48	51	1	57	3	44
REL-4W54-100	4	54	57	1	63	3	48
REL-4W60-100	4	60	63	1	69	3	53
REL-4W72-100	4	72	75	1	81	3	63
REL-5W18-100	5	18	20	1	27	3-1/2	30
REL-5W24-100	5	24	26	1	33	3-1/2	37
REL-5W30-100	5	30	32	1	39	3-1/2	45
REL-5W36-100	5	36	38	1	45	3-1/2	52
REL-5W42-100	5	42	44	1	51	3-1/2	59
REL-5W48-100	5	48	51	1	57	3	68
REL-5W54-100	5	54	57	1	63	3	75
REL-5W60-100	5	60	63	1	69	3	83
REL-5W72-100	5	72	75	1	81	3	98
REL-5W18-107	5	18	20	1-7/16	27	3-1/2	35
REL-5W24-107	5	24	26	1-7/16	33	3-1/2	45
REL-5W30-107	5	30	32	1-7/16	39	3-1/2	54
REL-5W36-107	5	36	38	1-7/16	45	3-1/2	63
REL-5W42-107	5	42	44	1-7/16	51	3-1/2	71
REL-5W48-107	5	48	51	1-7/16	57	3	81
REL-5W54-107	5	54	57	1-7/16	63	3	90
REL-5W60-107	5	60	63	1-7/16	69	3	99
REL-5W72-107	5	72	75	1-7/16	81	3	116
REL-5W18-115	5	18	20	1-15/16	27	3-1/2	47
REL-5W24-115	5	24	26	1-15/16	33	3-1/2	58
REL-5W30-115	5	30	32	1-15/16	39	3-1/2	69
REL-5W36-115	5	36	38	1-15/16	45	3-1/2	80
REL-5W42-115	5	42	44	1-15/16	51	3-1/2	91
REL-5W48-115	5	48	51	1-15/16	57	3	103
REL-5W54-115	5	54	57	1-15/16	63	3	114
REL-5W60-115	5	60	63	1-15/16	69	3	125
REL-5W72-115	5	72	75	1-15/16	81	3	147

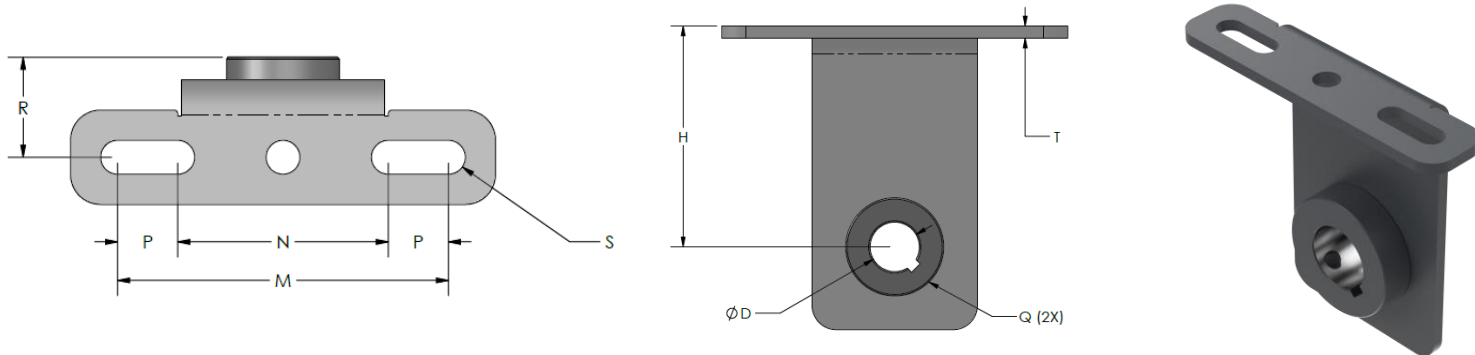
Part Number	A	B	C	D	E	F	Weight, lbs**
	Roller Diameter	Belt Width	Face Width	Shaft Diameter	Shaft Length	Shaft Extensions	
REL-6W18-100	6	18	20	1	27	3-1/2	38
REL-6W24-100	6	24	26	1	33	3-1/2	46
REL-6W30-100	6	30	32	1	39	3-1/2	56
REL-6W36-100	6	36	38	1	45	3-1/2	65
REL-6W42-100	6	42	44	1	51	3-1/2	74
REL-6W48-100	6	48	51	1	57	3	86
REL-6W54-100	6	54	57	1	63	3	95
REL-6W60-100	6	60	63	1	69	3	103
REL-6W72-100	6	72	75	1	81	3	122
REL-6W18-107	6	18	20	1-7/16	27	3-1/2	44
REL-6W24-107	6	24	26	1-7/16	33	3-1/2	55
REL-6W30-107	6	30	32	1-7/16	39	3-1/2	66
REL-6W36-107	6	36	38	1-7/16	45	3-1/2	77
REL-6W42-107	6	42	44	1-7/16	51	3-1/2	87
REL-6W48-107	6	48	51	1-7/16	57	3	99
REL-6W54-107	6	54	57	1-7/16	63	3	110
REL-6W60-107	6	60	63	1-7/16	69	3	121
REL-6W72-107	6	72	75	1-7/16	81	3	142
REL-6W18-115	6	18	20	1-15/16	27	3-1/2	56
REL-6W24-115	6	24	26	1-15/16	33	3-1/2	69
REL-6W30-115	6	30	32	1-15/16	39	3-1/2	81
REL-6W36-115	6	36	38	1-15/16	45	3-1/2	94
REL-6W42-115	6	42	44	1-15/16	51	3-1/2	107
REL-6W48-115	6	48	51	1-15/16	57	3	122
REL-6W54-115	6	54	57	1-15/16	63	3	135
REL-6W60-115	6	60	63	1-15/16	69	3	148
REL-6W72-115	6	72	75	1-15/16	81	3	173

** Weight includes roller and shaft.

CONVEYING COMPONENTS

Eradicator® Max Return Rollers

ACCESSORIES - DROP BRACKETS



Shafts do NOT require keys to securely mount the roller.

Custom drops or mounting holes are available upon request.

CEMA classes B, C, and D

Part Number	D	H	P	M	N	R	Q	Bolt Diameter	S	T
	Shaft Diameter	Drop	Slot Length	Slot Max Width	Slot Min Width	Hub to Slot	Set screw size		Slot Width	Bracket Thickness
RBB-D408-012	3/4	4-1/2	1	5-1/2	3-1/2	1.656	1/4	1/2	9/16	1/4
RBB-D408-100	1	4-1/2	1	5-1/2	3-1/2	1.656	5/16	1/2	9/16	1/4
RBB-D408-107	1-7/16	4-1/2	1	5-1/2	3-1/2	1.871	3/8	1/2	9/16	1/4
RBB-D408-115	1-15/16	4-1/2	1	5-1/2	3-1/2	2.031	1/2	1/2	9/16	1/4
RBB-D700-012	3/4	7	1	5-1/2	3-1/2	1.656	1/4	1/2	9/16	1/4
RBB-D700-100	1	7	1	5-1/2	3-1/2	1.656	5/16	1/2	9/16	1/4
RBB-D700-107	1-7/16	7	1	5-1/2	3-1/2	1.871	3/8	1/2	9/16	1/4
RBB-D700-115	1-15/16	7	1	5-1/2	3-1/2	2.031	1/2	1/2	9/16	1/4

CEMA class E

Part Number	D	H	P	M	N	R	Q	Bolt Diameter	S	T
	Shaft Diameter	Drop	Slot Length	Slot Max Width	Slot Min Width	Hub to Slot	Set screw size		Slot Width	Bracket Thickness
RBB-E408-012	3/4	4-1/2	1	10-1/2	8-1/2	1.781	1/4	3/4	13/16	1/4
RBB-E408-100	1	4-1/2	1	10-1/2	8-1/2	1.781	5/16	3/4	13/16	1/4
RBB-E408-107	1-7/16	4-1/2	1	10-1/2	8-1/2	1.906	3/8	3/4	13/16	1/4
RBB-E408-115	1-15/16	4-1/2	1	10-1/2	8-1/2	2.156	1/2	3/4	13/16	1/4
RBB-E700-012	3/4	7	1	10-1/2	8-1/2	1.781	1/4	3/4	13/16	1/4
RBB-E700-100	1	7	1	10-1/2	8-1/2	1.781	5/16	3/4	13/16	1/4
RBB-E700-107	1-7/16	7	1	10-1/2	8-1/2	1.906	3/8	3/4	13/16	1/4
RBB-E700-115	1-15/16	7	1	10-1/2	8-1/2	2.156	1/2	3/4	13/16	1/4

Load Bearing Roller Assemblies

Cam Followers

Diameters: 2" through 20" – Full Complement Needle Bearings

XR Rollers

Diameters: 1" through 10" – Ball Bearings or Tapered Roller Bearings

DCB Rollers

Diameters: 2" through 10" – Full Complement Cylindrical Roller Bearings

Track Rollers

Diameters: 1" through 20" – Ball Bearings or Tapered Roller Bearings

Extreme Duty & Industry Solutions

Unique solutions to resolve failure modes and wear patterns in a variety of demanding industries



Conveyor Pulleys

Drum Pulleys- Package Handling - FC & MC Series

Diameters: 2" through 12.75" - Featuring PCI Trapezoidal Crown Technology

Drum Pulleys- Bulk Handling - Heavy Duty & Mine Duty

Diameters: standards up to 60" - Featuring PCI Contoured Integral End Disks

Wing Pulleys - Self-Cleaning

Diameters: 2" through 52" - Featuring The Eradicator®-The World's First True Wing Hybrid

Stainless Steel Conveyor Pulleys

Diameters: 2" through 60" - Featuring Refined Classes for Painless Stainless Selection



Conveying Components

Eradicator® Max Style Return Rolls

Live and dead shaft options designed to shed abrasive material and provide a deeper wear surface than other rolls.

Take-Up Frames & Covers

Narrow & Wide Slot, Center Pull, Top Angle, Light & Heavy Duty Protected Screw, and Telescoping Style

Pneumatic Clutches, Brakes and Clutch/Brakes

Suited for low-speed accumulation, zone or zero-pressure conveyor systems with occasional starts and stops, and high torque capacities.

Axles & Shafting

Multiple diameters and materials with extensive capacity in custom detailing



Accessories

Stainless Steel Compression Hubs & Bushings

Several styles manufactured from 300 grade stainless steel materials

Lagging & Coating Services

Cold bonded, weld-on replaceable and over twenty hot vulcanized compounds

